

Buffalo

BRAND  SEED

PRODUCT CATALOG





Welcome

To the Buffalo Brand Product catalog

Our Commitment

We believe in providing quality seed at a competitive price, by offering technical support and outstanding service in a timely manner. One of the most satisfying parts of our business is the personal relationships we've built over the years. As we look to the future, you can be assured that we will continue to take care of you with an old-fashioned focus on building long-term relationships. Our success as a company depends on your success. Buffalo Brand Seed carries grasses, forbs, shrubs, and erosion control products. We also carry an extensive line of seed for turf, alfalfa and small grains.

Helping you GROW...one SEED at a time.



*Founding members of Buffalo Brand Seed company. Established in Greeley Colorado 2017.
Left to right; Troy Gray, Dustin Terrell, Michael Hays, and Mike Frink.*

Troy Gray Dustin Terrell Michael Hays Mike Frink





Contents

Pasture Mixes	5-6
Reclamation Mixes	7-8
Turf Mixes	9-10
Wildflower Mixes	11-12
Custom Mixes	13-14
Pasture Grass	17-18
Native & Reclamation	19
Erosion Control	20
Turfgrass	21-22
Alfalfa	23
Annual Forages	24
Small Grains & Legumes	25
Cover Crop	26
Forbs-Shrubs-Wetland	27
Misc.	28



PASTURE MIXES

Buffalo Brand Seed carries a variety of pasture mixes to fit the most pasture needs according to livestock use, irrigation availability, forage production, elevation, and soil types. The mixes listed are normally kept in stock, but it is always wise to call ahead as inventory can change rapidly during the year. We occasionally change the formulations to take advantage of seasonal markets to offer mixes that are both effective and economical. Our qualified and helpful staff will be glad to assist you in determining the best mix based on your needs.



Cattle in pasture



Horses in pasture



PASTURE MIXES

Name	Mix Components	Seeding Rate	Description
Buffalo Brand® Dryland Pasture Mix	<ul style="list-style-type: none"> • Smooth Bromegrass • Forage Perennial Ryegrass • Orchardgrass • Pubescent Wheatgrass • Intermediate Wheatgrass 	Suggested seeding rate 20-25 lbs. per acre.	A premium mixture of introduced cool-season grasses for the Great Plains and Intermountain region. Great for stabilization, erosion control, haying and grazing.
Buffalo Brand® PM-6 Premium Irrigated Mix	<ul style="list-style-type: none"> • Meadow Brome • Orchardgrass • Festulolium • Pubescent Wheatgrass • Creeping Foxtail 	Suggested seeding rate 20-30 lbs. per acre.	Superior mixture of high yielding, cool-season grasses chosen for intense grazing and outstanding forage production.
Buffalo Brand® Equestrian Irrigated Mix	<ul style="list-style-type: none"> • Meadow Brome • Orchardgrass • Forage Perennial Ryegrass 	Suggested seeding rate 20-30 lbs. per acre.	This combination of cool-season, leafy grasses is designed to put the highest RFV in the bale. An excellent choice for today's grass hay producer targeting both horse and other livestock forage markets.
Buffalo Brand® Economy Irrigated Mix	<ul style="list-style-type: none"> • Orchardgrass • Tall Fescue, (E.F.) • Meadow Brome • Festulolium 	Suggested seeding rate 20-30 lbs. per acre.	A great mixture for forage/hay production in areas receiving limited irrigation or sub-irrigated acres.



Dryland Pasture Mix



Equestrian Irrigated Mix



Baled Dryland Pasture Mix



PASTURE MIXES

Name	Mix Components	Seeding Rate	Description
Buffalo Brand® Saline / Alkali Tolerant Hay Mix	<ul style="list-style-type: none"> • Tall Wheatgrass • Forage Perennial Ryegrass • Tall Fescue, (E.F.) • Meadow Brome • Green Wheatgrass 	Suggested seeding rate 15-20 lbs. per acre.	This mixture is targeted for use on high pH or high salt soils. These grasses will tolerate these conditions, making use of poor quality soils for grazing or hay production.
Buffalo Brand® Mountain Meadow Mix	<ul style="list-style-type: none"> • Winter Rye (cereal grain) • Forage Perennial Ryegrass • Mountain Brome • Timothy • Forage KY Bluegrass • Orchardgrass • Alsike Clover 	Suggested seeding rate 20-30 lbs. per acre.	This mixture can be used for many different applications including soil stabilization, reclamation, as well as pasture/hay production at higher elevations. An excellent choice for ski slopes, logging roads and high elevation revegetation.
Buffalo Brand® Shortgrass Mix	<ul style="list-style-type: none"> • Sideoats Grama • Buffalograss • Blue Grama 	Suggested seeding rate 10-15 lbs. per acre.	Drought tolerant, sod-forming, warm-season grasses for the short grass prairie dominate this mix. Often planted on the corners of irrigated circles.
Buffalo Brand® Wetland Mix	<ul style="list-style-type: none"> • Canadian Wildrye • Meadow Brome • Creeping Foxtail, (Coated) • Timothy • Red Top 	Suggested seeding rate 20-30 lbs. per acre.	A mixture of palatable forage grasses that can withstand seasonal flooding of short-term standing water. Very popular for re-establishing growth on damaged flood plains. Recommended for use along fluctuating shorelines, dams and lowland pastures.

**Mix formulations subject to change based on seed markets and availability.*



RECLAMATION MIXES

Buffalo Brand Seed carries native and reclamation seed mixes that can be used on reclamation and revegetation projects. The mixes listed are normally kept in stock, but it is always wise to call ahead as inventory can change rapidly during certain times of the year. We occasionally change the formulations to take advantage of seasonal markets to offer mixes that are both effective and economical. Our qualified and helpful staff will be glad to assist you in determining the best mix based on your needs.



Hydroseeding a hillside



Wattles around a retention pond



RECLAMATION MIXES

Name	Mix Components	Seeding Rate	Description
Buffalo Brand® Sandy Soil Mix	<ul style="list-style-type: none"> • Western Wheatgrass • Bluebunch Wheatgrass • Switchgrass • Annual Ryegrass • Blue Grama • Indian Ricegrass • Green Needle 	Suggested seeding rate 15-20 lbs. per acre.	A mixture of warm and cool season grasses designed for sandy to loamy based soils. This mixture can also be used for decorative or ornamental landscape purposes.
Buffalo Brand® Mountain Meadow Mix	<ul style="list-style-type: none"> • Winter Rye (cereal grain) • Forage Perennial Ryegrass • Mountain Brome • Timothy • Forage KY Bluegrass • Orchardgrass • Alsike Clover 	Suggested seeding rate 20-30 lbs. per acre.	This mixture can be used for many different applications including soil stabilization, reclamation, as well as pasture/hay production at higher elevations. An excellent choice for ski slopes, logging roads and high elevation revegetation.
Buffalo Brand® Foothills Mix	<ul style="list-style-type: none"> • Bluebunch Wheatgrass • Annual Ryegrass • Slender Wheatgrass • Mountain Brome • Siberian Wheatgrass • Green Needle 	Suggested seeding rate 20-25 lbs. per acre.	A mixture of grasses adapted to elevations from 3,000-10,000 feet in the Intermountain West. Provides natural cover and soil stabilization in dryland situations.



Reclaiming disturbed areas



Foothills open meadow



Ultimate Color Mix



RECLAMATION MIXES

Name	Mix Components	Seeding Rate	Description
Buffalo Brand® Western Native Mix	<ul style="list-style-type: none"> • Slender Wheatgrass • Bluebunch Wheatgrass • Thickspike Wheatgrass • Blue Grama • Western Wheatgrass • Indian Ricegrass • Green Needle 	Suggested seeding rate 15-20 lbs. per acre.	A mixture of cool and warm-season grasses that are native to the Western U.S. This mix can be used in a variety of situations from reclamation to ornamental landscapes.
Buffalo Brand® Low Grow Mix	<ul style="list-style-type: none"> • Crested Wheatgrass • Ryegrass • Sheep Fescue • Chewings Fescue • Forage Bluegrass 	Suggested seeding rate 1-2 lbs. per 1000 sq. ft.	A quick establishing mix of cool-season grasses for use in most any soil type. Lower growing grasses for minimal mowing.
Buffalo Brand® Ultimate Color Mix	<ul style="list-style-type: none"> • Crested Wheatgrass • Ryegrass • Sheep Fescue • Chewings Fescue • Forage Bluegrass • Dryland Wildflower Mix 	Suggested seeding rate 1-2 lbs. per 1000 sq. ft.	Same great formula as Low Grow Mix, but with 5% wildflowers added. A perfect blend for meadows when a splash of color is desired.
Buffalo Brand® Wetland Mix	<ul style="list-style-type: none"> • Canadian Wildrye • Meadow Brome • Creeping Foxtail (Coated) • Timothy • Red Top 	Suggested seeding rate 20-30 lbs. per acre.	A mixture of palatable forage grasses that can with stand seasonal flooding of short-term standing water. Very popular for re-establishing growth on damaged flood plains. Recommended for use along fluctuating shorelines, dams and lowland pastures.

**Mix formulations subject to change based on seed markets and availability.*



TURF MIXES

Buffalo Brand Seed carries a variety of turf mixes to fit most residential and commercial needs according to use, irrigation availability, texture, elevation, and soil types. The mixes listed are normally kept in stock, but it is always wise to call ahead as inventory can change rapidly during the year. We occasionally change the formulations to take advantage of seasonal markets to offer mixes that are both effective and economical. Our qualified and helpful staff will be glad to assist you in determining the best mix based on your needs.



All-Blue Blend



Turf in a park



TURF MIXES

Name	Mix Components	Seeding Rate	Description
Buffalo Brand® All-Blue Blend	All-Blue is a blend of top-performing Kentucky Bluegrasses	Suggested seeding Rate 3-5 lbs. per 1000 sq. ft.	All-Blue displays a rapid rate of establishment a dense growth habit and dark green color. Choose All-Blue for outstanding turf on golf courses, sod farms, playing fields and home lawns.
Buffalo Brand® Supreme Lawn Mix	A high quality mix of 80% top-performing Kentucky Bluegrasses and 20% Intermediate Ryegrasses.	Suggested seeding Rate 4-6 lbs. per 1000 sq. ft.	Expect a dense uniform sod when planting this mix of grasses. It's dark green color makes it an ideal choice for new lawn seedings or renovation of existing lawns.
Buffalo Brand® Economy Lawn Mix	A mixture of 50% Kentucky Bluegrasses and 50% Intermediate Ryegrasses for the cost conscious homeowner.	Suggested seeding Rate 4-6 lbs. per 1000 sq. ft.	A great mix of turf grasses at the most economical price. Quick establishment with a moderate texture make it well suited for overseeding. Great for sports fields, parks and home lawns.
Buffalo Brand® Deep Root Blend	A blend of elite bluegrasses that will handle a 1/2" cut.	Suggested seeding Rate 3-5 lbs. per 1000 sq. ft.	A deep rooting, fine textured, dark green colored blend that is great for sports fields, golf course fairways and high traffic areas.

*Mix formulations subject to change based on seed markets and availability.



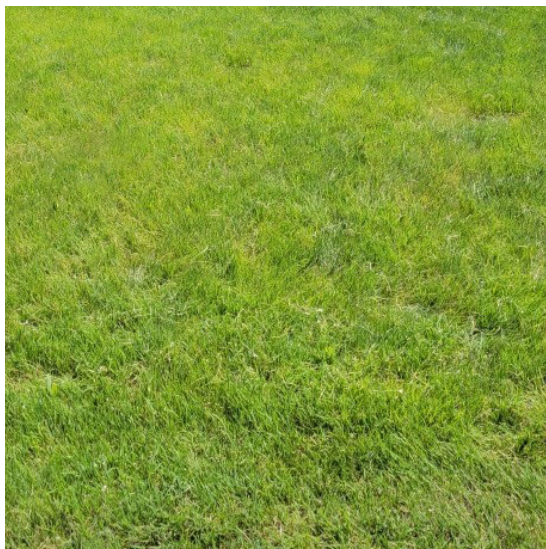
TURF MIXES



Dura-Turf Lawn Mix



Turf Field



Native Turf Mix

Name	Mix Components	Seeding Rate	Description
Buffalo Brand® Emerald III Blend	<ul style="list-style-type: none"> • 3-way blend of Elite Turf-Type Tall Fescues with excellent disease tolerance and turf uniformity 	Suggested seeding Rate 8-12 lbs. per 1000 sq. ft.	A very durable and tough Tall Fescue blend. This blend will perform well in most environments and requires minimal care.
Buffalo Brand® On Par Perennial Ryegrass Blend	<ul style="list-style-type: none"> • 3-way Perennial Ryegrass Blend 	Suggested seeding Rate 6-8 lbs. per 1000 sq. ft.	This perennial ryegrass blend possesses great Gray Leaf resistance and salt tolerance while continuing to have quick green up.
Buffalo Brand® Dura-Turf Plus Lawn Mix	<ul style="list-style-type: none"> • Tall Fescue, 3-Elite Varieties • KY Bluegrass • Ryegrass 	Suggested seeding Rate 6-8 lbs. per 1000 sq. ft.	An excellent mix for high traffic areas that has minimal care requirements.
Buffalo Brand® Low Maintenance Mix	<ul style="list-style-type: none"> • Hard Fescue • Creeping Red Fescue • Chewings Fescue • Sheep Fescue • Ryegrass • KY Bluegrass 	Suggested seeding Rate 3-5 lbs. per 1000 sq. ft.	A fine textured, low maintenance mixture that will perform well in shaded areas as well as a wide array of soil conditions.
Buffalo Brand® Low Grow Mix	<ul style="list-style-type: none"> • Crested Wheatgrass • Ryegrass • Sheep Fescue • Chewings Fescue • Forage Bluegrass 	Suggested seeding rate 1-2 lbs. per 1000 sq. ft..	A quick establishing mix of cool season grasses for use in most any soil type. Lower growing grasses for minimal mowing.
Buffalo Brand® Native Turf Mix	<ul style="list-style-type: none"> • Buffalograss • Blue Grama 	Suggested seeding Rate 2-3 lbs. per 1000 sq. ft.	This low growing, warm season mix contains Blue Grama, the Colorado state grass. An excellent alternative grass mix.
Buffalo Brand® Transition Turf Mix	<ul style="list-style-type: none"> • Ryegrass • Tall Fescue, Turf Type • Smooth Brome • Forage Bluegrass 	Suggested seeding rate 1-2 lbs. per 1000 sq. ft.	This mix of cool season grasses does well in various scenarios, including construction overlot seeding and residential seedings of outlying areas.



WILDFLOWER MIXES

Buffalo Brand Seed wildflower mixtures are formulated based on climatic conditions, elevation, and purpose. Annuals have been included in most mixes, to establish cover quickly and show color yearly. Some annuals may reseed and produce plants the following year. Our mixtures are designed to give a wide range of colors and periods of bloom throughout the season. We occasionally change the formulations to take advantage of seasonal markets to offer mixes that are both effective and economical. Our qualified staff will be glad to assist you in determining your needs.



Dryland Wildflower Mix



Mountain Wildflower Mix



WILDFLOWER MIXES

Name	Mix Components	Seeding Rate	Description
Buffalo Brand® Dryland Wildflower Mix	Contains <i>(but may not be limited to)</i> : California Poppy, Perennial Gaillardia, Sulphur Cosmos, Baby's Breath, Annual Gaillardia, Blue Flax, California Bluebell, Corn Poppy, Rocky Mtn. Penstemon, Dwarf Cornflower, Spurred Snapdragon, African Stick Daisy, Tidy Tips, Prairie Coneflower, African Daisy, Sweet Alyssum, Plains Coreopsis.	Suggested seeding rate 5-10 lbs. per acre or 4oz. per 1000 sq. ft.	A mix that contains annuals and perennials. Used in areas that have well drained soils. Easy to establish.
Buffalo Brand® Low Grow Wildflower Mix	Contains <i>(but may not be limited to)</i> : Candy Tuft, Dwarf Cornflower, California Poppy, Siberian Wallflower, Dwarf Lanceleaf Coreopsis, Spurred Snapdragon, African Stick Daisy, Dwarf Godetia, Cottage Pinks, Tall Sweet Alyssum, Dwarf Evening Primrose, Catchfly, Moss Verbana, Dwarf Plains Coreopsis, Iceland Poppy, Tussocks Bellflower, Forget-Me-Not, California Bluebell.	Suggested seeding rate 5-10 lbs. per acre or 4oz. per 1000 sq. ft.	Annual and perennial wildflowers that tend to grow less than 16 inches high. Thrives with morning sun and tolerates some shade.
Buffalo Brand® Mountain Wildflower Mix	Contains <i>(but may not be limited to)</i> : California Poppy, Babys Breath, Lewis Blue Flax, Siberian Wallflower, Prairie & Purple Coneflower, Bachelor Button Tall Mixed & Bachelor Dwarf Polka Dot, Blanketflower, Catchfly, Rocky Mtn. Beeplant, Corn Poppy, Rocky Mtn. Penstemon, Shasta Daisy, Yarrow, Common Columbine, Black-Eyed Susan.	Suggested seeding rate 5-10 lbs. per acre or 4oz. per 1000 sq. ft.	Annual and perennial wildflowers that grow well above 7000 ft. Thrives with morning sun. Can tolerate dryland conditions.

*Mix formulations subject to change based on seed markets and availability.



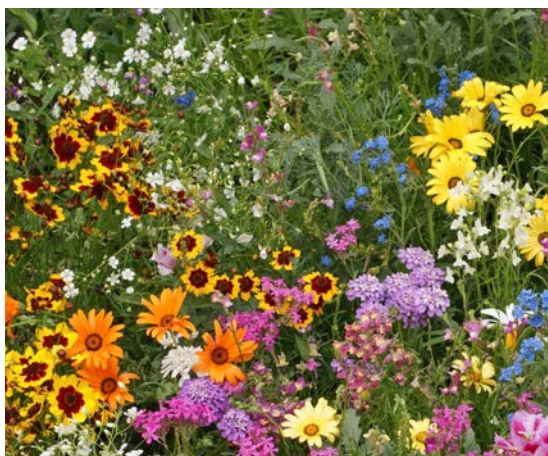
WILDFLOWER MIXES



Low Grow Wildflower Mix



Western Wildflower Mix



All Annual Wildflower Mix



All Perennial Wildflower Mix



Bee Happy Wildflower Mix



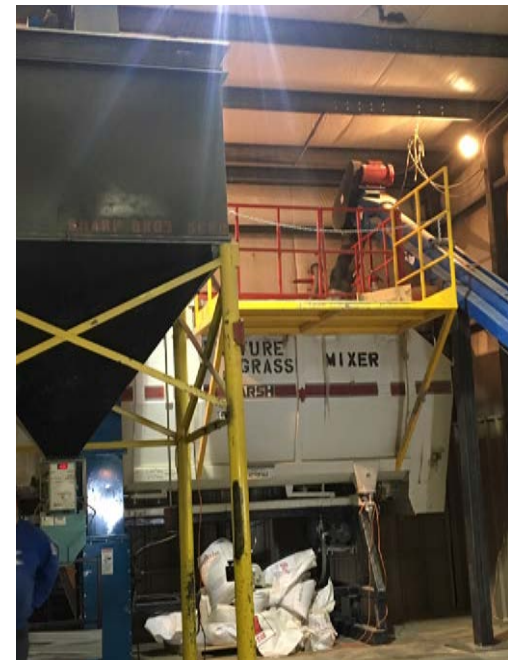
Customer submitted picture of Western Wildflower Mix

Name	Mix Components	Seeding Rate	Description
Buffalo Brand® Western Wildflower Mix	Contains <i>(but may not be limited to)</i> : Perennial Lupine, Blanketflower, California Poppy, Clarkia, Crown Tickseed, Blue Flax, Corn Poppy, Dwarf Blue Cornflower, Rocky Mtn. Penstemon, Green Thread, Pale Evening Primrose, Globe Gilia, Deerhorn Clarkia, Palmer Penstemon, Prairie Coneflower, Cornflower Mix (Polka Dot), Plains Coreopsis.	Suggested seeding rate 5-10 lbs. per acre or 4oz. per 1000 sq. ft.	A mix containing annual and perennial, native and non-native wildflowers that grow well in western states at elevations under 7000 ft. Does well in full sun.
Buffalo Brand® All Annual Wildflower Mix	Contains <i>(but may not be limited to)</i> : Chinese Forget Me Not, Scarlet Flax, Candytuft, Babys Breath, Cornflower, Calendula, California Poppy, Indian Blanket, Tree Mallow, Mixed Corn Poppy, Virginia Stock, Catchfly, Spurred Snapdragon, Garland Daisy, Dwarf Plains Coreopsis.	Suggested seeding rate 5-10 lbs. per acre or 4oz. per 1000 sq. ft.	A mix containing all annual wildflowers with vibrant colors. Seed mix is formulated for the western states.
Buffalo Brand® All Perennial Wildflower Mix	Contains <i>(but may not be limited to)</i> : Lance-Leaved Coreopsis, Purple Coneflower, Lewis Blue Flax, Sweet William, Moss Verbena, Dwarf Columbine, Black Eyed Susan, Sundial Lupine, Mexican Hat, Marvel of Peru, Blanketflower, Prairie Coneflower, Shasta Daisy, Big Leaf Lupine, Wild Bergamot, Foxglove, Spiked Gayfeather, Mexican Primrose, White Yarrow, Golden Yarrow.	Suggested seeding rate 5-10 lbs. per acre or 4oz. per 1000 sq. ft.	A mix containing all perennial wildflowers adapted to the western United States. Plant at lower elevations & use supplemental water. May not flower first year.
Buffalo Brand® Bee Happy Wildflower Mix	Contains <i>(but may not be limited to)</i> : Chinese Forget Me Not, Purple Coneflower, Bergamot, Corn Poppy, Lance-Leaved & Plains Coreopsis, Blue Flax, China Aster, California Poppy, Baby Blue Eyes, Tidy-Tips, Fleabane Daisy, Globe Gilia, New England Aster, Siberian Wallflower, Sweet Alyssum, Hyssop.	Suggested seeding rate 6-12 lbs. per acre or 5oz. per 1000 sq. ft.	Annual and Perennial Wildflowers that provide pollen to the honey bee population. The mix contains a wide variety of colors.



CUSTOM MIXES

Buffalo Brand Seed specializes in providing custom seed mixes from quote request thru delivery. We can help you create a mix or quote a specific mix. The majority of reclamation, city, county and state projects have specific mix designs. We can accept bid specifications for a quote by fax, email, or over the phone. When sending custom seed mix quote requests, please note the size and scope of the project, acceptability of substitutes, shipping requirements, and projected timeline. Please keep in mind that we *CAN NOT* accept returns on custom mixes.

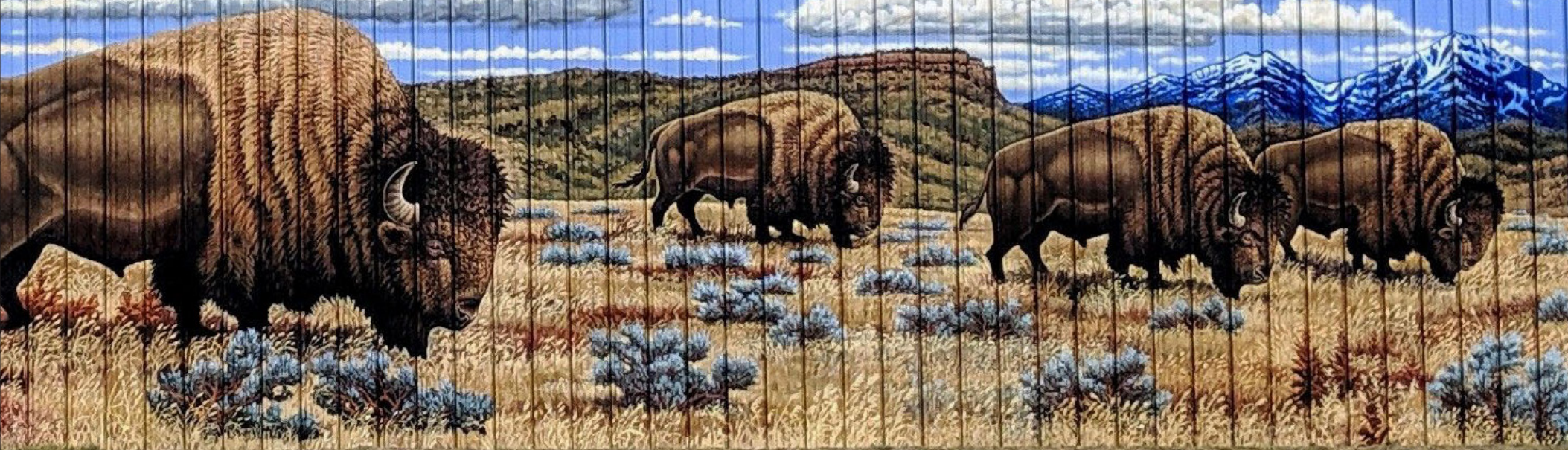






Buff
BRAND

falo
SEED





PASTURE GRASS

Buffalo Brand Seed carries a variety of pasture grasses to fit most forage needs according to livestock use, irrigation availability, forage production, elevation, and soil types. These grasses are normally kept in stock, but it is always wise to call ahead as inventory can change rapidly during the year. Our qualified and helpful staff will be glad to assist you in determining the best grasses based on your needs.



Italian Ryegrass



Orchardgrass



Smooth Bromegrass

Pasture Ryegrass

Species	Varieties	Seeding Rate per Acre	Description
Annual		20-25#	Annual, Introduced, Cool
Perennial Tetraploid	Amazon	15-20#	Perennial, Native, Cool
Italian Annual	Oryx	30-40#	Biennial, Introduced, Cool
Festulolium	Sweet Tart	15-20#	Perennial, Native, Cool

Orchardgrass

Species	Varieties	Seeding Rate per Acre	Description
Early Maturing	Paiute Potomac Profile	10-15#	Perennial, Introduced, Cool
Late Maturing	Icon Latar Crown Royale	10-15#	Perennial, Introduced, Cool

Bromegrass

Species	Varieties	Seeding Rate per Acre	Description
Smooth	Lincoln or VNS Manchar	15-20#	Perennial, Introduced, Cool
Meadow	Fleet Cache Paddock	15-20#	Perennial, Native, Cool



Timothy



Pubescent Wheatgrass



Crested Wheatgrass



Pasture Grass, Misc.

Species	Varieties	Seeding Rate per Acre	Description
Sheep Fescue	Covar	8-10#	Perennial, Introduced, Cool
Canada Bluegrass	Canon	7-10#	Perennial, Native, Warm
Kentucky Bluegrass	Ginger (Forage)	7-12#	Perennial, Introduced, Cool
Hard Fescue	Durar	15-20#	Perennial, Introduced, Cool
Tall Fescue	Fawn (E.F.) Ky 31 Goliath (E.F.) Rustler (E.F.)	15-20#	Perennial, Native, Cool
Creeping Foxtail	Garrison Garrison (Coated)	5-7#	Perennial, Introduced, Cool
Reed Canarygrass	Palaton	5-10#	Perennial, Native, Cool
Red Top		3-4#	Annual, Native, Cool
Timothy	Climax KY Early	7-10#	Perennial, Introduced, Cool
Bermuda	Wrangler (coated, Forage Type)	10-12#	Perennial, Warm
Teff	Charger	8-12#	Annual, Introduced, Warm

Wheatgrass

Species	Varieties	Seeding Rate per Acre	Description
Crested	Ephraim (rhizomous) Fairway Hycrest Nordan	10-15#	Perennial, Introduced, Cool
Intermediate	Oahe Rush	10-15#	Perennial, Native, Cool
Green	Newhy AC Saltlander	20-25#	Perennial, Introduced, Cool
Pubescent	Luna Manska	15-20#	Perennial, Introduced, Cool
Tall	Alkar Jose	15-20#	Perennial, Introduced, Cool

NATIVE & RECLAMATION



Buffalo Brand Seed carries a very large collection of native and reclamation grasses to fit most reclamation and seeding needs according to use, irrigation availability, elevation, and soil types. The majority of these grasses are normally kept in stock, but it is always wise to call ahead as inventory can change rapidly during the year. Our qualified and helpful staff will be glad to assist you in determining the best grasses based on your needs.



Bottlebrush Squirreltail



Blue Grama



Great Basin Wildrye



Indian Ricegrass



Warm Season Grasses



EROSION CONTROL

Blankets

- 100% Straw, Double Net (Photo-Degradable)
- 70% Straw and 30% Coconut Blanket (Photo-Degradable)
- 100% Coconut Blanket (Photo-Degradable)
- 100% Straw Blanket - Double Net (Bio-Degradable)
- 70% Straw - 30% Coconut Blanket (Bio-Degradable)
- 100% Coconut Blanket (Bio-Degradable)

All blanket sizes are 8' x 112.5' (900 sq. ft.). Order 10% extra for overlaps 8' x 112.5' blankets require approx. 300 staples.

Photo-Degradable = Double sided poly netting

Bio-Degradable = Double sided jute netting

Metal Blanket Staples

Metal staples are 11 gauge x 6"

- 100 per bag
- 1000 per box



Straw Blankets and Metal Staples

Straw Wattles

- 9" diameter X 25' length
- 12" diameter X 20' length

Wooden Stakes

- 1.25" x 1.25" x 48" Sold in bundles of 25

- 1" x 2" x 18" sold in bundles of 50 use with 9" wattles

Silt Fence

- Silt Fence (no Stakes, 3' x 1000' roll)
- Silt Fence (Stakes attached 1.25" x 1.25" x 48", silt fence 3' x 100' roll)

Wooden Stakes

- 1" x 1" x 24" sold in bundles of 25 use with 12" wattles



Silt Fence with Wooden Stakes

Mulch & Tack

- HydroMulch
Wood fiber mulch
- HydroMulch with Tackifier
Central Fiber wood mulch with plantago tackifier
- Tackifier
Plantago

HydroMulch - Flat area - 1 bag/1452 sq. ft. (30 bags/acre)
Slope area - 1 bag/1089 sq. ft. (40 bags/acre)

HydroMulch with Tackifier - Flat area - 1 bag/1452 sq. ft. (30 bags/acre)
Slope area - 1 bag/1089 sq. ft. (40 bags/acre)

Tackifier - Application Rate - 80 lbs./acre, Dust Control 150 lbs./acre



Hydromulch with Tackifier being applied



TURFGRASS

Buffalo Brand Seed carries a assortment of turf grasses to fit most turf needs according to use, irrigation availability, elevation, and soil types. The majority of these grasses are normally kept in stock, but it is always wise to call ahead as inventory can change rapidly during the year. Our qualified and helpful staff will be glad to assist you in determining the best grasses based on your needs.



Kentucky Bluegrass Lawn



Sportsfield and Park turfgrass



Ryegrass

Kentucky Bluegrass

Species	Classification / Varieties	Seeding Rate per 1000 sq. ft.	Description
Kentucky Bluegrass	Compact America Quartz and Mercury	1-2#	Low, compact, high quality turf, finer leaf density, good in shade.
	Compact Midnight Blue Devil and Rugby II	1-2#	Low, compact growth, dark green color, late spring green-up, good heat tolerance. Spring green-up, good heat tolerance.
	Compact Mid-Atlantic Jackpot and Appalacian	1-2#	Deep, extensive roots and rhizomes, high summer stress tolerance.
	Compact Blue Coat	1-2#	Low, compact growth, high quality turf.
	Shamrock Rockstar and Arc	1-2#	Strong rhizome development, good turf quality and sod strength.
	Texas X Kentucky Hybrids Blue Gem	1-2#	Hybrid between Texas and Ky Bluegrass, heat tolerant, extensive rhizomes, drought tolerant, wear tolerant.
	BVMG Aviator II and Corsair	1-2#	Medium-good turf, medium texture.
	Eurasian Midwest (common) Selway and Argyle	1-2#	High water use, dormant during summer, good for soil stabilization and conservation.

Ryegrass (Turf-type)

A quick germinating and establishing bunchgrass.

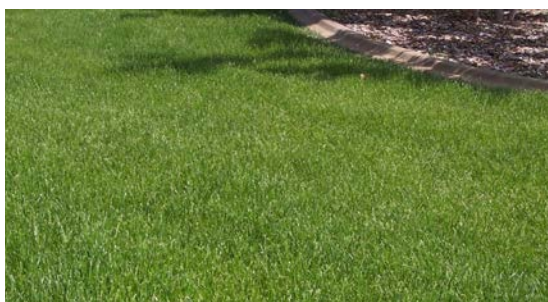
Species	Varieties	Seeding Rate per 1000 sq. ft.	Description
Perennial Ryegrass	On Par Blend	7-8#	3-Way blend with superior turf durability and color richness. Excellent for low mowing.
Perennial Ryegrass	Champion GQ	7-8#	A blend with stress and disease tolerance, Excellent wear tolerance for fairways and lawns.
Intermediate Ryegrass	Remedy or Transaction Rogue	7-8#	A short-lived perennial generally used in mixes.
Annual Ryegrass Turf	Madrone or Candidame	7-8#	A quick temporary cover used for overseeding. Course leaf texture with a light green color.



TURFGRASS

Fescues A perennial grass that is climate and drought tolerant. A low maintenance bunchgrass.

Species	Varieties	Seeding Rate per 1000 sq. ft.	Description
Fine Fescues			
Chewings Fescue	Johnstown II or Seducer	4-6 #	Very fine leaf texture, cool, shaded areas with little mowing, irrigation and sunlight.
Creeping Red Fescue	Reverent or Ruddy	3-5#	Long-lived, slow developing grass, used for turf and erosion control, excellent shade tolerance
Hard Fescue	Sword II, Gladiator or Viking H2O	4-6#	Fine leaf tufted grass, tolerant of alkaline soils, often used for erosion control
Sheep Fescue	Blue Mesa	3-5#	Short-lived bunchgrass, drought tolerant, adapts to poor soils and higher elevations
Tall Fescue			
Turf Type Tall Fescue	Buffalo Brand Emerald III Blend	8-10#	Moderate to course leaf texture, bunchgrass, tolerance to heat and foot traffic.



Tall Fescue



Bermudagrass



Bentgrass

Bermudagrass A long-lived, strongly sod-forming grass commonly used for lawns and pastures in the more humid southern states.

Species	Varieties	Seeding Rate per 1000 sq. ft.	Description
Bermudagrass	LaPrima Blend (Coated Turf-Type)	2-3#	Fast germination, rapid establishment and excellent turf performance.
	Yukon (Coated Turf-Type)	2-3#	Early spring green-up and winter hardy. Dark green color and drought tolerant.

Bentgrass A turf grass that spreads by stolons and has shallow roots.

Species	Varieties	Seeding Rate per 1000 sq. ft.	Description
Bentgrass	Seaside II, L-93, Penncross, T-1, Pure Select, Dominator, Blend, Dominant Extreme 007	1-1.5#	Lawns, golf course greens and athletic fields. Cool season that forms a mat.



ALFALFA



Buffalo Brand Seed offers a wide variety of proprietary alfalfa varieties. Within these varieties we offer high-digestibility, roundup-ready, hybrid and conventional varieties to meet your needs.



Hybrid Variety

Non-Hybrid Variety

Species	Description
Harvextra & Hi-Gest High Digestibility	"Harvextra" (Roundup-Ready) and conventional bred "Hi-Gest" technology. Both offer high forage quality, wider cutting windows with yield potential, improved fiber digestibility and intake for more milk and meat production.
Roundup-Ready Technology	Allows better stand during establishment and stand persistence and high-quality yield opportunity.
Hybrid Alfalfa Technology	The hybrid alfalfa continues to win trials even as the stands get older. In addition to yield advantage and increased plant uniformity and consistency, hybrid alfalfas also grow a finer stem, which shortens dry-down time and increases palatability.
Conventional Alfalfas	Conventional bred proprietary alfalfa varieties. We offer an extensive line of varieties to meet your demand within our region. All varieties offer excellent winter hardiness with at least a 4 fall dormancy* which allows for excellent yield potential with the ability to over-winter in harsh conditions.

- Hytons Blend (#1 selling Alfalfa)
- Northern Origin (common)
- Ladak
- Ladak DL
- Ranger
- Lahontan
- Rhizoma
- Vernal
- Falcata



Alfalfa windrow



Bison BMR



Foxtail Millet



Pearl Millet



Grain Sorghum



ANNUAL FORAGES

Species	Description
Hybrid Forage Sorghums <ul style="list-style-type: none"> • Bison Brachytic BMR • Bison BMR • Bison with pollinator 	Single-cut annual forages, used for silage production, using less water and other inputs than corn, yet yielding at least 80% of corn silage, putting more forages in your pit for much less cost.
Hybrid Sorghum x Sudangrass <ul style="list-style-type: none"> • Buffalo Honey BMR • Buffalo Honey II • Buffalo Honey 	Double cut forage producer. Can be used in a wide range of adaption, make hay or silage and get a second crop for grazing in the fall. A crop that has excellent drought tolerance but used with irrigation it is a high-yielding crop for forage production.
Foxtail Millets <ul style="list-style-type: none"> • Golden German – golden seed color • White Wonder – white seed color • Red Siberian – red seed color • German R – golden seed color used mainly south • Japanese – used in wetter areas especially for wildlife habitat 	An excellent source of forage production with limited water requirements. An excellent choice on dryland but can be used in irrigation also.
Proso Millet <ul style="list-style-type: none"> • Huntsman – white grain color • Sunup – white grain color • Cerise – red grain color 	Grain producer mainly sold into the bird food market, can be double-cropped after small grain harvest when moisture is present.
Hybrid Pearl Millet <ul style="list-style-type: none"> • Buffalo Max 	Used in irrigation to produce a small stock, leafy product that is safe for horses because it produces no prussic acid.
Grain Sorghums or Milo <ul style="list-style-type: none"> • Buffalo Dash II – red grain 95 day maturity • Buffalo Dash W – white grain 95 day maturity • Buffalo Dash G2 – Early red grain 85 day maturity 	Grain producing used for animal feed. Very productive in dryland areas. Wide area of adaption.



Buffalo Honey BMR



SMALL GRAINS

Grains are an annual crop that can be grown for hay, grain or forage. They can also be used for a cover crop to prevent erosion over a single season.



Barley



Wheat



Triticale

Species	Description
Spring Barley, GoldenEye	6 row
Spring Barley, Claymore	2 row
Spring Barley, Haymaker	Forage
Spring Barley, Stockford	Forage
Fall Barley	
Oats, Jerry	Hay or grain
Oats, Monida	Hay or grain
Oats, Everleaf 126	Forage
Oats, Titan	Forage
Oats, Intimidator	Forage
Hard Red Spring Wheat, Soren	
Hard Red Spring Wheat, Jefferson	
Hard Red Winter Wheat	
Spring Triticale	
Trical 141 Cert.	
Fall Triticale	
Winter Rye	

**Varieties vary each year please call for availability.*



LEGUMES

Legumes are natural nitrogen fixers. They can be planted by themselves or with other legumes and grasses.

**Organic Legumes and Clovers available for special order.*

Perennial Legumes

- Birdsfoot Trefoil
- Birdsfoot Trefoil, Leo
- Birdsfoot Trefoil, Norcen
- Cicer Milkvetch
- Cicer Milkvetch, Lutana
- Cicer Milkvetch, Monarch Cert.
- Crown Vetch, Chemung Cert.
- Sainfoin
- Sainfoin, Eski
- Sainfoin, Remont
- Sainfoin, Shoshone Cert.

Clover

- Alsike
- Berseem
- Ladino
- Mammoth Red
- Medium Red
- Strawberry
- Yellow Blossom Sweet
- White Blossom Sweet
- White Dutch

Annual Legumes

- Yellow Field Peas, Montech 4193
- Field Peas, 4010
- Field Peas, Austrian
- Common Vetch
- Hairy Winter Vetch



Crown Vetch



Sainfoin



Yellow Blossom Sweet Clover



Companion Crop



Seeding a Companion Crop



Spring Cover Crop



Cover Crop



COVER CROP

The use of cover crops in a crop rotation is a well-known practice to build soil health and put nutrients back into the ground. Cover crops are plants or a mixture of plants that are grown during a fallow period between cash crops. The crops can be grazed or left for decomposition. Companion crops are a cover crop grown with a cash crop at a lower seeding rate. The companion crop contains a diverse mixture of plant species that feed the cash crop as well as provide a habitat for beneficial insects.

Mix	Seeding Rate	Description
Spring Oat and Field Pea Mix	100# per acre	Oats, Forage Peas
Spring Cropper Mix	50# per acre	Oats, Peas, Turnips, Daikon Radish and Rape
Summer Cropper Mix	34# per acre	Peas, Soybeans, Sorghum x Sudan, Daikon Radish, Turnips and Rape
Fall Cropper Barley Mix	58# per acre	Barley, Peas, Sorghum x Sudan, Rape, Daikon Radish and Turnips
Fall Cropper Triticale Mix	58# per acre	Triticale, Peas, Sorghum x Sudan, Rape, Daikon Radish and Turnips
Fall Cropper Oat Mix	62# per acre	Oats, Peas, Rape, Daikon Radish and Turnips
Companion Crop Mix #3	14# per acre	Italian Annual Ryegrass, Daikon Radish, Turnips, Medium Red Clover, Rape and Buckwheat
Green Manure Mix	1# per 1000 sq. ft.	Austrian Winter Peas, Common Vetch, Hairy Vetch, Oats and Winter Rye

Species

Many species of Brassicas and Legumes can be used in cover crops. The brassicas and legumes can work alone or together as they help the soil health in different ways. Brassicas are cool season annuals that are palatable to grazing animals. They are nitrogen movers and help with the compaction in the soil. Nitrogen is the most critical fertility element for most crops, by using legumes in a cover crop mix it will help to fix the nitrogen in the soil. Some grasses and cereal grains can also be used as cover crops as they help increase organic matter and move deep nutrients to the soil surface.

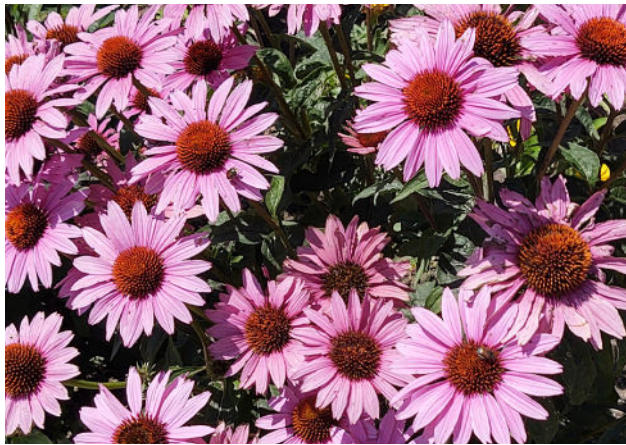
- | | |
|---|--|
| <ul style="list-style-type: none"> • Forage Turnips, Purple Top • Forage Turnips, Hercules (Forage Type) • Flax (Feed) • Rape Seed (Dwarf Essex) • Daikon Radish • Radish, Farmer (Forage Type) • Buckwheat • Black Oil Sunflower | <ul style="list-style-type: none"> • Black Oil Sunflower • Canola • Lentils • Brown Mustard • Yellow Mustard • Forage Soybeans • Safflower • Faba Bean |
|---|--|

Buffalo Brand Seed sells several species that can be mixed or used individually.



FORB-SHRUBS-WETLAND

We keep a variety of Forb, Shrub and Wetland species in stock, and have access to many more that can be brought in to our warehouse upon request. Due to the volatility of some of these species, pricing and availability can vary greatly throughout the season. Please contact us to discuss your needs.



Purple Coneflower



Rubber Rabbitbush



3 types of Sedges



Black-Eyed Susan



Winterfat Seed



Inland Saltgrass

MISCELLANEOUS

At Buffalo Brand Seed we strive to be a one stop shop and carry more than seed. This is why you will find the following miscellaneous products to make you planting as easy as possible.

Inoculant

Helps enable the seed to germinate quickly and stimulates plant hormones for root formation and development.

- Mycorrhizal Inoculum, AM120 Standard
- Mycorrhizal Inoculum, AM120 Basin & High Plains
- Exceed Alfalfa - Clover Inoculant (Treats 50#)
- Exceed Pea - Vetch Inoculant (Treats 100#)
- Exceed Pea - Vetch Inoculant (Treats 1500#)
- Exceed Sainfoin Inoculant (Treats 100#)
- Exceed Birdsfoot (Treats 50#)

**all Exceed Inoculants are OMRI certified*

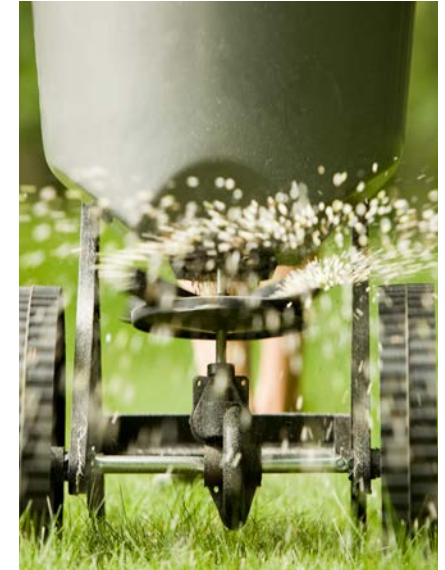
Fertilizer

The fertilizer listed below is starter fertilizer for new planting.

- Starter Fertilizer 18-46-0 (50 lb. bags)
Fertilizer approx. 10,000 sq.ft. per bag
- Richlawn 7-2-1 Fertilizer* (40 lb. bags)
12-15 # per 1000 sq. ft.

Misc. Products

- Yard Tuff Broadcast Spreader
A shoulder spreader used for small seeding jobs.
- Ricehulls
Used to aid in the planting process to help seed move through a drill easily.



Helpful Information

Handy Conversions

1lb. = 0.4536 Kg

1Kg = 2.205 lbs.

1 US ton = 2000 lbs.

1 acre = 43560 sq. ft.

1 acre = 0.4047 hectares

1 acre = 4840 sq. yds.

1 sq. yd. = 9 sq. ft.

1 section = 640 acres

½ section = 320 acres

¼ section = 160 acres

Pure Live Seed (PLS) Conversions

Pure Live Seed% = multiply Purity% by Germ%

Bulk lbs. to PLS lbs. = multiply bulk lbs. by PLS%

PLS lbs. to Bulk lbs. = divide PLS lbs. by PLS%

Bulk\$/lb. to PLS \$/lb.= divide Bulk \$/lb. by PLS%

PLS \$/lb. = multiply PLS \$/lb. by PLS %

Contact Information

Buffalo Brand Seed

101 East 4th Street Road

Greeley, CO 80631

970-356-4710

info@buffalobrandseed.com

buffalobrandseed.com



We would like to express our humble gratitude for allowing us to earn your business over the last 17 years. We know that you have many choices to fill your seed needs and we are honored that you have chosen Buffalo Brand Seed.

Like many things in the current world, our pricelist is transitioning to a digital version. The Buffalo Brand Seed pricelist will be shared with you allowing us to provide you with the most up-to-date pricing.

In addition, we are excited to provide a printed catalog that provides more in-depth information on our products for your reference.

If you have not yet received an emailed price list, please, let us know so we can update your information and get you the most current pricing.

As always, we and our staff are here to assist you so call, email, or stop by. The coffee is always on.

Thank you again for your business and we look forward to the next time we can serve you.

Sincerely,

Troy, Michael, Dustin, Mike and the Buffalo Brand Seed Team.

Buffalo

BRAND SEED

Helping you GROW... One SEED at a time!



BUFFALO BRAND SEED
Greeley, CO 80631
970-356-4710
buffalobrandseed.com

